

## Transvaginal Probe

EUP-VV531

### INSTRUCTION MANUAL

Notes for operators and responsible maintenance personnel

- ★ Please read through this Instruction Manual carefully prior to use.
- ★ Keep this Instruction Manual together with the system with care to make it available anytime.

 **Hitachi, Ltd.**

Tokyo, Japan

Q1E-EP1028-5

© Hitachi, Ltd. 2013, 2017. All rights reserved.

Manufacturer:



Hitachi, Ltd.  
2-16-1, Higashi-Ueno, Taito-ku, Tokyo, 110-0015, Japan  
+81-3-6284-3668  
<http://www.hitachi.com/businesses/healthcare/index.html>

European

Representative:



Hitachi Medical Systems GmbH  
Otto-von-Guericke-Ring 3 D-65205 Wiesbaden, Germany

EU Importer:

Address:

Hitachi Medical Systems Europe Holding AG  
Sumpfstrasse 13 CH-6300 Zug, Switzerland

Local Distributor:

## About this manual

This instruction manual shall provide instructions for using, cleaning, and disinfecting the HITACHI ultrasound probes. It also describes safety considerations, maintenance.

For instructions for operating the main unit, refer to the operation manual for it.

Before using the probe, thoroughly read this manual and keep this book for future reference.

If you have any questions concerning the manual, please contact a service support.

The following conventions are used throughout the manual to denote information of special emphasis.




**WARNING:** “Warning” is used to indicate the presence of a hazard which can cause severe personal injury, death, or substantial property damage if the warning is ignored.

**CAUTION:** “Caution” is used to indicate the presence of a hazard which will or can cause minor personal injury or property damage if the caution is ignored.

**NOTICE:** “Notice” is used to notify people of installation, operation, or maintenance information which is important, but not hazard related.








### Graphical Symbols for Use in Labeling of Hitachi Ultrasound Probes

Some graphical symbols that are used in labeling of Hitachi Ultrasound Probes are compliant with EN980:2008 standard. Refer to the following table about the meanings of them.

Explanation of Symbol	Symbol	Descriptive Content
Manufacturer Company Name and Address		Hitachi,Ltd 2-16-1, Higashi-Ueno,taito-ku, Tokyo,110-0015,Japan
Authorized Representative in The European Community		Hitachi Medical Systems GmbH Otto-von-Guericke-Ring 3 D-65205 Wiesbaden, Germany
Keep away from Sunlight		Store the probe in a cool, dustproof and dark, dry environment to avoid high temperature and humidity and direct sunlight.

Definition of symbol

The following symbol is also used for HITACHI Ultrasound Probes.

Location	Symbol	Definition
Probe connector		This instrument complies with Directive 93/42/EEC relating to Medical Device and Directive 2011/65/EU relating to RoHS
Probe connector	IPX7	IPX7 mark See section 1.5.
Probe connector		Type BF APPLIED PART
Probe connector		General warning sign
Probe connector		Warning; dangerous voltage
Probe connector		Caution; Biohazard
Probe connector		Follow the instruction manual to operate this instrument. If not avoided, may result in injury, property damage, or the equipment trouble.
Probe connector		Do not waste the instrument as general waste. Comply with a local regulation.
Probe connector	Rx Only	By prescription only. U.S. Federal Law restricts this device to sale on order of a physician only.

## CONTENTS

Page

1. Introduction .....	1
1.1 Features.....	1
1.2 Principles of operation .....	1
1.3 Intended Use.....	1
1.4 Composition.....	1
1.5 Construction.....	2
2. Inspection before Use .....	2
2.1 Inspection for Appropriate Connection.....	2
2.2 Inspection for Material Surface .....	2
3. Operation Procedure .....	3
4. Cleaning and Disinfection .....	4
4.1 Point of use (Pre-cleaning).....	5
4.2 Containment and transportation .....	5
4.3 Manual Cleaning and disinfection .....	6
4.4 Drying.....	7
4.5 Inspection .....	7
5. Maintenance and Safety Inspection.....	8
5.1 Daily check.....	8
6. Safety Precautions.....	9
7. Specifications .....	10
7.1 Probe .....	10
7.2 Suppliers List.....	11
8. Disposal of the probe.....	11

## 1. Introduction

### 1.1 Features

The probe of Model EUP-VV531 is a convex array type.

The acoustic output of this probe when connected to ultrasound scanner was measured according to the IEC 60601-2-37 standard. The table of measured acoustic output data is contained in the operation manual of each ultrasound scanner.

This probe is categorized in class IIa according to Directive 93/42/EEC.

According to IEC 60601-1 the probe is classified as type BF.

### 1.2 Principles of operation

This probe and the ultrasound diagnostic scanner enable image diagnosis using ultrasonic waves. This system operates under the principles described below.

- 1) When an electric pulse signal is applied from the transmitter to the transducer of the probe, the transducer converts electric signals into mechanical vibration energy for emitting pulse-shaped ultrasonic waves into the body part, liquid or other medium contacting the transducer.
- 2) The emitted ultrasonic waves are reflected by boundaries with different acoustic characteristics (acoustic impedance) within the body.
- 3) The transducer is also used to receive reflected ultrasonic waves. The transducer vibrates mechanically due to the received ultrasonic waves and converts mechanical vibrations into electric energy. Electric signals are converted to shades of brightness by brightness modulation to obtain an image.

### 1.3 Intended Use

The Transvaginal Probe EUP-VV531 is designed for observation and diagnosis mainly of the following regions by connecting with the HITACHI ultrasound scanner.

- Transvaginal
- Transrectal

### 1.4 Composition

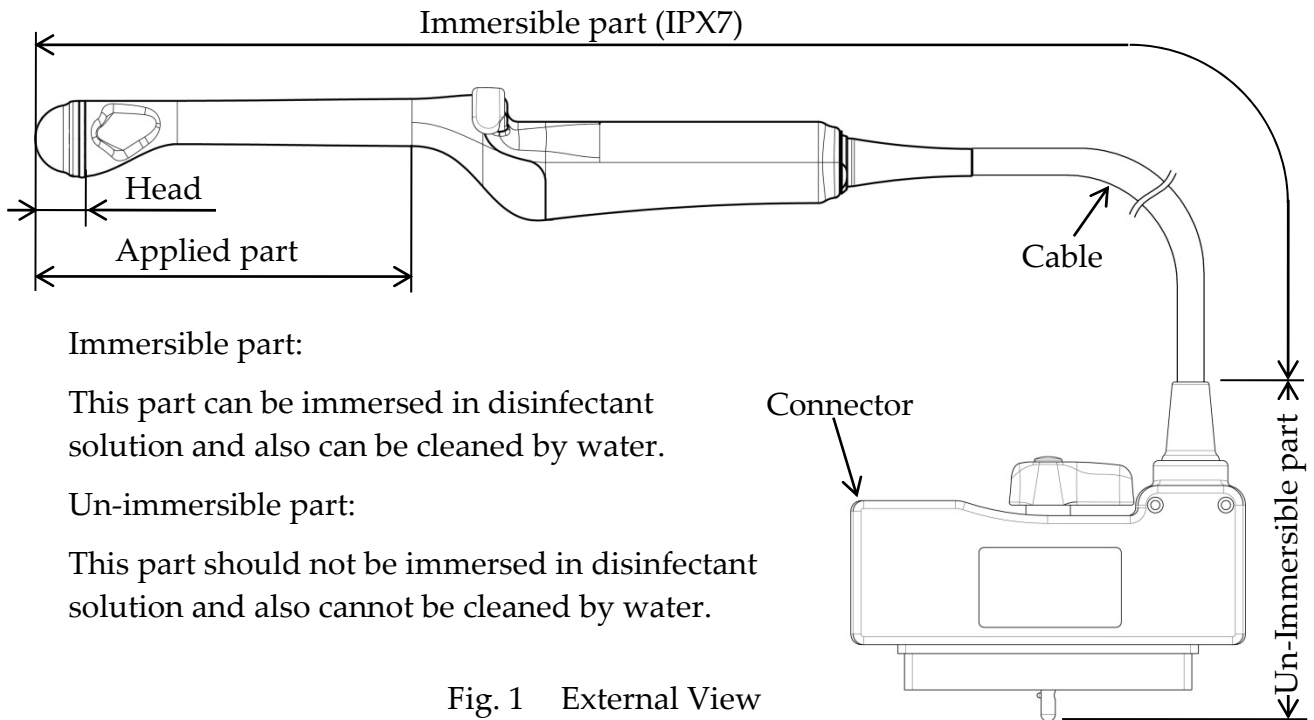
The probe components of the EUP-VV531 are as follows:

- 1) Probe EUP-VV531 ..... 1 piece
- 2) Instruction Manual..... 1 copy

### CAUTION

Disinfection has not been made to the probe shipped from the factory. Prior to use of it, be sure to clean and disinfect it.

## 1.5 Construction



### Immersible part:

This part can be immersed in disinfectant solution and also can be cleaned by water.

### Un-immersible part:

This part should not be immersed in disinfectant solution and also cannot be cleaned by water.

Fig. 1 External View

## 2. Inspection before Use

Prior to use, the probe must be carefully inspected that it is appropriate for use. If not, do not use the probe and immediately contact a service support.

### 2.1 Inspection for Appropriate Connection

- 1) Check that the system is correctly operating. Refer to the instruction manual for the Main unit.
- 2) Never attach or connect unauthorized devices or instruments on the probe, such as unauthorized biopsy attachments.

### 2.2 Inspection for Material Surface

Visually check the surface of the probe head, housing and cable for any crack, scratch or denaturalization.



### 3. Operation Procedure

- 1) Confirm that the probe is disinfected.
- 2) Connect the probe, operate the Main unit, and adjust the image according to the instructions given in the operation manual for the main unit.
- 3) Relationship between direction of the probe and the right-left orientation mark on the image is shown in Fig. 2.
- 4) Before a diagnosis, put a probe cover to the tip of the probe certainly. Before putting a probe cover, put sterilized acoustic jelly to the tip of the probe and attach a probe cover to the tip of the probe closely. Some latex material may create allergic reaction. Please use allergy free material covers.
- 5) After the use of the probe, it should be cleaned and disinfected, then store it in an adequate place.

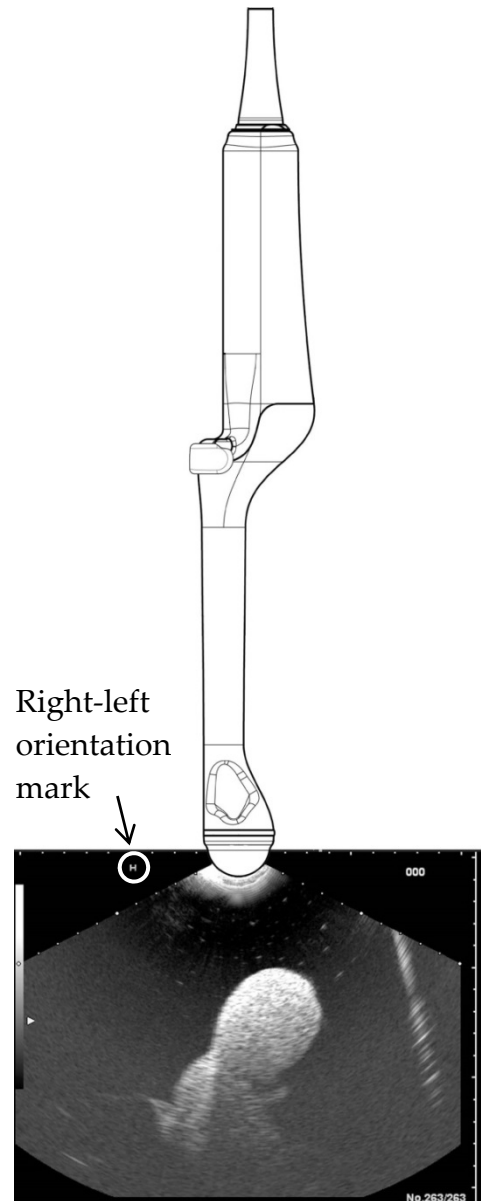


Fig. 2 Relationship between direction of the probe and Right-left Orientation Mark

#### 4. Cleaning and Disinfection



The probe and accessory must be reprocessed after each use. Refer to the reprocessing instruction in this chapter.

WARNINGS	<ul style="list-style-type: none"> <li>- The probe is delivered unsterile. Prior to the first use, reprocess the probe.</li> <li>- Temperature should not exceed 50°C during reprocessing.</li> <li>- Probe connector is not water resistant.</li> </ul>
Limitations on reprocessing	<p>The probe is not completely submersible. The immersible part is shown in Fig. 1 The un-immersible part should be disinfected by wipe disinfection.</p> <p>Sterilization is not possible for this probe.</p>
Transportation before using	<p>The probe should be packed in a sterile pouch or container to transport from Central Sterile Supply Department (CSSD) to an operating room. Be careful not to damage the sterile pouch or container during transportation.</p>

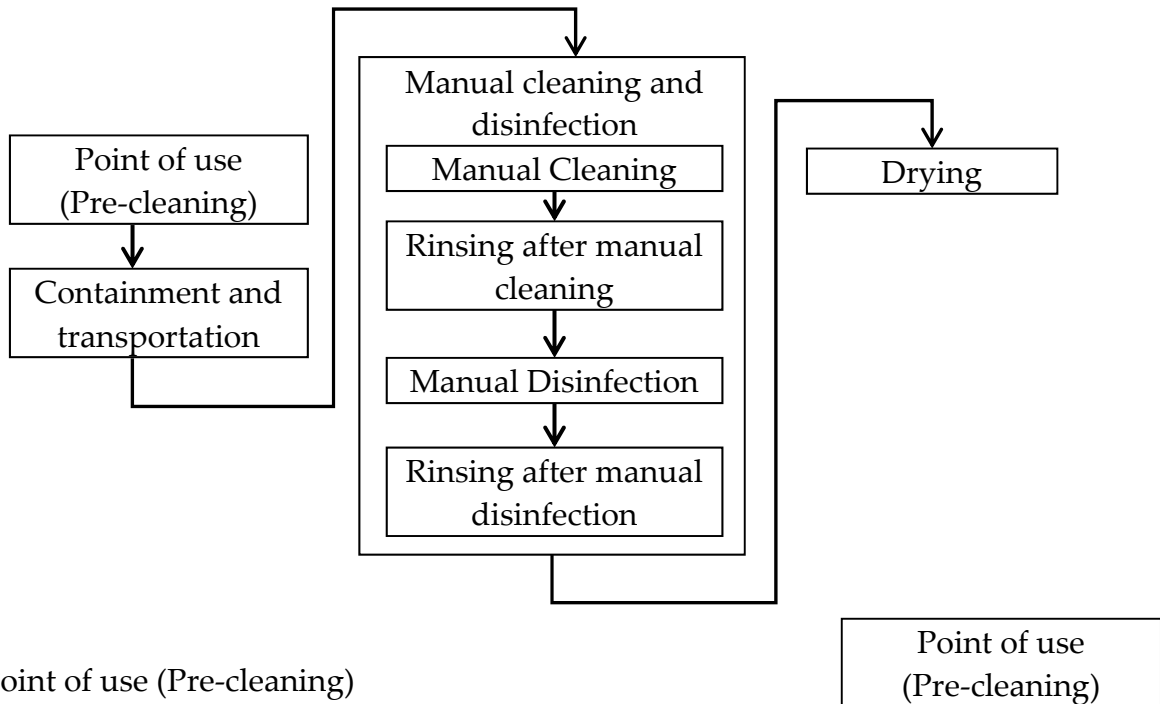
#### Levels of reprocessing requirements:

Depending on the application of the product and with regard to risk evaluation, the user has to classify the medical device according to the current Medical Device Directive for processing of medical devices as uncritical, semi-critical or critical. Supporting information concerning this topic is listed in the table below. The user is responsible for correct classification of the medical device.

Classification	Definition	Processing
uncritical	Application part only contacts intact and uninjured skin	Cleaning Disinfection
semicritical	Application part contacts mucosa (intracavitary application)	Cleaning Disinfection (Disinfectant with virucidal effect)
critical	Application part contacts intracorporeal tissue directly (operative application)	Cleaning Disinfection (Disinfectant with virucidal effect - minimum) Sterilization

According to the intended use, EUP-VV531 probe is classified as semicritical.

The flowchart of the reprocessing process of this probe is as follows.



#### 4.1 Point of use (Pre-cleaning)

Pre-cleaning should be done immediately after each use. The procedure is as follows:

- 1) Remove the protective cover.
- 2) Clean the probe of all patient's blood or fluid with running tap water until the surface of the probe looks visually clean.
- 3) Wipe the whole surface of the probe with gauze pad and remove superficial visible impurities.

#### 4.2 Containment and transportation

Putting the contaminated equipment into exclusive shock and damage proof container for transportation is recommended. It is recommended that instruments are reprocessed as soon as possible and not later than 4 hours after usage.

### 4.3 Manual Cleaning and disinfection

Prepare following items before manual cleaning and disinfection:

- a) Detergent: Cidezyme (Johnson & Johnson, #2258) or another cleaning agent with approved material compatibility for this medical device
- b) Disinfectant: Cidex OPA (Johnson & Johnson, # 20391) or another disinfectant with approved material compatibility for this medical device
- c) Two tanks, one for cleaning and one for disinfection - optional:  
1 additional tank for rinsing with deionized/tap water (sufficient size for immersion of the immersible part of the probe at full length)
- d) Soft, fluff free cloth or single use towel
- e) Personal protective equipment (gloves, water repellent protective skirt, face protection mask or protective glasses, see also instructions of the manufacturer for the detergent and the disinfectant)

Manual Cleaning:

Prepare the detergent solution in a tank with cold water (please follow the instructions of the detergent manufacturer regarding application, dilution and contact time).

- 1) The temperature of the detergent solution should be between 15-30°C, concentration is 1.6%. Please note the minimum contact time of the detergent in the manufacturer's instruction. If a differing detergent is used, please also note the approved material compatibility for the medical device.
- 2) Immerse the immersible part of the probe without connector into the diluted detergent solution (see Fig. 3). Wipe the immersible part of the probe under the surface of the detergent solution with a soft cloth to remove all visible soil. Be sure that all grooves of the probe are implemented during the cleaning process.
- 3) The immersible part of the probe should be left in the detergent solution according to the specified contact time of the detergent manufacturer.
- 4) Wipe the un-immersible parts of the probe with a soft cloth dipped with the detergent solution.
- 5) Rinse the probe with running tap water for 1 minute. (alternatively: immerse the immersible part of the probe in a tray filled with deionized water/tap water (see Fig. 3) for 5 min.)
- 6) Visually check the outer surface of the probe for cleanness. If necessary, use magnifying glass for visually check. If there is still soil visible, repeat all above steps.

Water, Detergent  
or Disinfectant

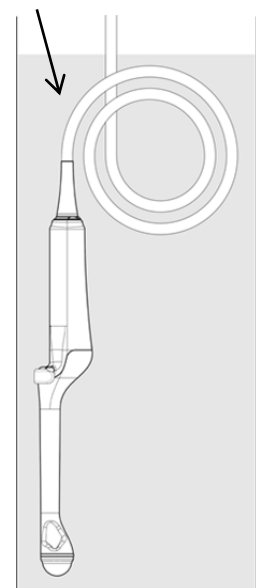


Fig. 3 Immersion of the probe

### Manual disinfection:

- 1) Prepare the disinfectant solution in a tank with cold water (please follow the instructions of the disinfectant manufacturer regarding application, concentration, microbiological efficiency, service life and contact time).
- 2) Confirm the concentration of the disinfectant before immersing the probe. Although Cidex® OPA does not need to be diluted, it is recommended to use test strips to verify the concentration. The test strips can indicate whether or not the concentration is above the Minimum Effective Concentration (MEC). Please also note the expiration date of the test stripes. Temperature of disinfectant solution should be minimum 20°C. The minimum contact time is 5 minutes. If a different disinfectant is used, follow the manufacturer's instructions. Please also consider the material compatibility for the medical device.
- 3) Immerse the immersible part of the probe into the disinfectant (see Fig. 3). Set a clock to insure the recommended contact time which is 5 minutes.
- 4) Rinse the immersible part of the probe with deionized water for 1 minute. (alternatively: immerse the immersible part of the probe in a tray filled with deionized water (see Fig. 3) for 5 min.)
- 5) Visually check the outer surface of the probe for leavings of the disinfectant. If necessary, repeat the rinsing.

#### 4.4 Drying

Drying

- 1) Wipe the probe with a single-use, fluff-free wipe or towel to remove moisture from the surface of the probe.
- 2) Dry the probe naturally in an ambient temperature between 15-30°C for a minimum of 4 hours. Alternatively the equipment can be dried using a drying heater at a temperature of less than 50°C.

#### 4.5 Inspection

Inspect the equipment for any damage such as crack, scratch or deformation. Do not use it if any damage is found.

### **WARNING**

Do not perform any sterilization methods with pressurization, depressurization and high temperature such as EO, steam and STERRAD sterilization to this probe. If the probe is sterilized by these methods, it suffers serious damage and will be unusable.

## 5. Maintenance and Safety Inspection

### 5.1 Daily check

- 1) Visually check the surface of the probe head, housing and cable for any crack, scratch or denaturalization. If you find damage, do not use the probe and immediately contact a service support.
- 2) After using the probe, it should be cleaned and disinfected according to “4. Cleaning and disinfection”, then store it in a cool and dark place avoid high temperature and humidity, direct sunlight.

## 6. Safety Precautions

### **WARNING**

- Never use the probe if the probe head, housing or cable are cracked or damaged.
- Warning in case of using probe covers which latex is contained to. The latex may cause such allergic reactions as itching, rubor, urticaria, swelling, fever, anhelation, wheezing, depression of blood pressure, shock and so on. For the patients suspected of latex allergy, do not use the latex-containing medical devices. If your patient shows any of above mentioned symptoms during the operation, stop the use of the latex-containing medical devices immediately and take an appropriate treatment to the patient.

### **CAUTION**

- By examination of an early pregnancy the exposure time shall be as short as possible. Start examination with acoustic output power set to L (Low).
- The probe connector is not waterproof. Do not allow liquid to contact the connector.
- Do not drop, hit or bent the probe.
- Use only water, detergents and disinfectants in the suppliers list. Between uses, store the probe holder of scanner.
- Under sterile condition use appropriate protection for probe and cable. Some Latex material may create allergic reactions.
- The acoustic lens of the probe is manufactured very thin and delicate to get the high resolution. Therefore, in case of wiping out the ultrasound jelly or cleaning the surface of the acoustic lens, please use the soft cloth or tissue paper and handle with care.
- The probe is not delivered disinfected.
- Never use this probe except for its intended use, vaginal or rectal. If you use this probe to the surface of the human body for examinations, there is a possibility to negatively affect to peripheral medical devices by electromagnetic disturbance that this probe transmits.

## 7. Specifications

### 7.1 Probe

Type:	EUP-VV531 Transvaginal probe
Center frequency:	6 MHz
Technology:	Convex Array Probe
Dimensions:	See Fig. 4.
Weight:	Approx. 1.0 kg (incl. cable and connector)
Scanning angle:	150°
Probe materials:	Bio-compatible allergy free components
Acoustic output:	According to IEC60601-2-37 (See Main Unit manual.)
Applicable system:	Depending on production and upgrade status. For detailed information contact a service support.
Classification:	MDD classification IIa.
Cleaning:	Applicable detergents are listed in the suppliers list
Disinfection:	Applicable disinfectants are listed in the suppliers list
Operating conditions:	
Ambient temperature;	25 - 35°C
Contact surface temperature (temperature of examinee);	max. 42°C
Relative humidity;	30 - 85%
Storage conditions:	
Temperature;	-10 - +55°C
Relative humidity;	10 - 95% (subject to no condensation)



## 7.2 Suppliers List

The products listed below are seriously tested and approved for use with the Transvaginal Probe EUP-VV531.

Product name	Manufacturer	Purpose
Klenzyme	Klenzyme	Cleaner
STERANIOS 2%	ANIOS	Disinfectant
Gigasept FF	Schülke & Mayr	Disinfectant
CIDEX OPA	Johnson & Johnson	Disinfectant
CIDEX	Johnson & Johnson	Disinfectant
CIDEX Plus	Johnson & Johnson	Disinfectant
Nu-Cidex	Johnson & Johnson	Disinfectant
Stabimed	B. Braun	Disinfectant
ALKAZYME	ALKAPHARM	Cleaning- disinfectant

Please contact your local distributor for a current version of the "Disinfectant/Sterilization Method Compatibility for Ultrasound Probe and Accessory List".

## 8. Disposal of the probe

Recycle or dispose equipment properly in compliance with your organizational rules and your local laws.

### CAUTION

Before disposing equipment, disinfect or take other infection-prevention measures. Disposal of equipment without taking the proper preventative measures can lead to infection.

## Waste Electrical and Electronic Equipment (WEEE) Directive

The illustration on the right is required by the EU WEEE Directive to appear on all electrical and electronic equipment. For proper disposal of this product in an EU nation, contact an EU office or agency and observe appropriate local and national regulations and laws.



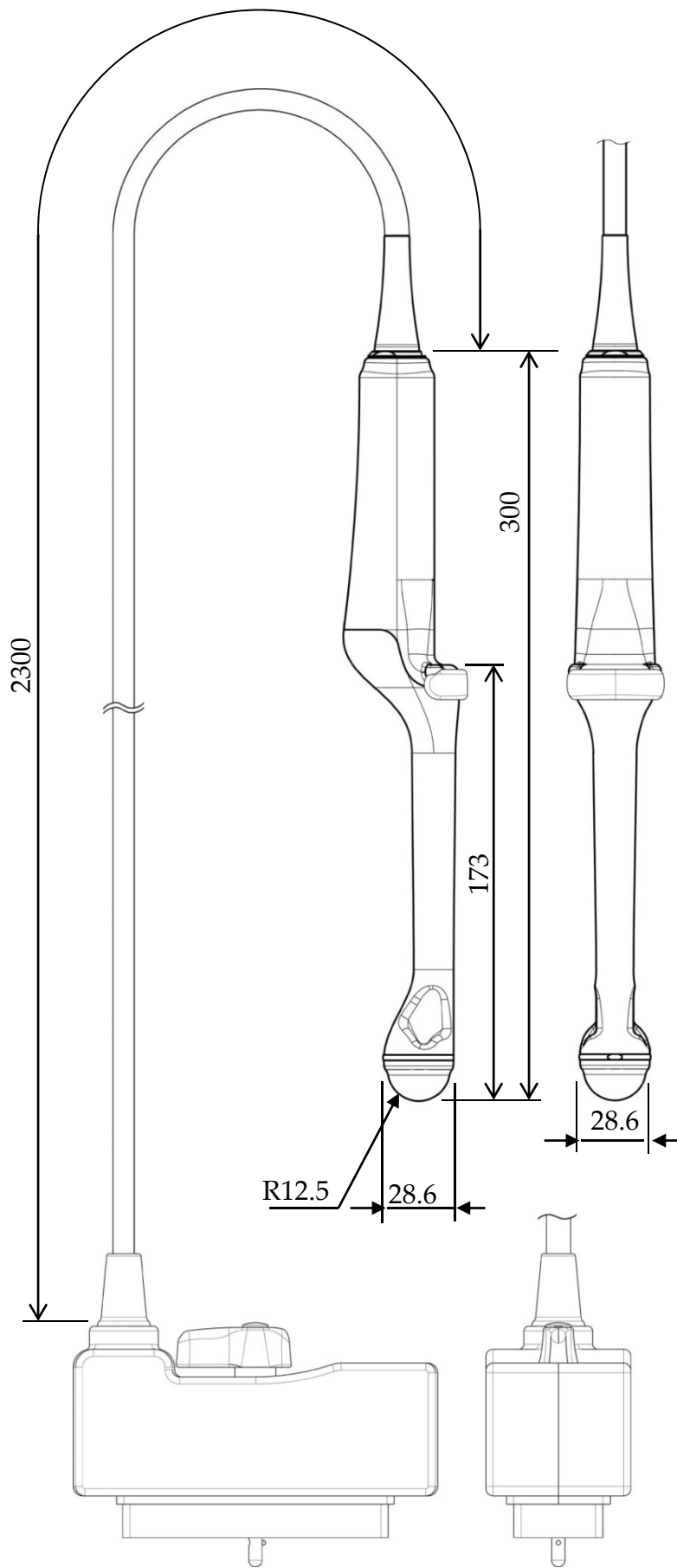


Fig. 4 Dimensions of the probe

Unit: mm

