



# EKO 7

Cardiovascular Ultrasound System

[www.medison.com](http://www.medison.com) ●●● [sales@medison.com](mailto:sales@medison.com)

see it all ●●●  
**MEDISON**

CT-EKO 7 CAV-TTW-ISP-100502



# EKO 7

Cardiovascular Ultrasound System

see it all ●●●  
**MEDISON**

# The specialist Cardiovascular Ultrasound System

If you really want to focus on cardiovascular diagnosis, meet the EKO 7, the ultrasound system built for dedicated cardiovascular use - from ergonomics to specific image quality requirements. Easy-to-use features, state of the art ergonomics and the latest cardiovascular ultrasound technologies combine with the very best in image quality to make diagnosis easier, and maximize your workplace output. You can concentrate more on the patient, less on the system.

# EKO 7



## Acquire an extraordinary view of the heart

The EKO 7 features our top-of-the-range 2D imaging, color Doppler, Stress Echo and Speckle Strain, with smart quantification tools. All this will enable you to make confident, fact-based clinical decisions, and give patients the best possible treatment.



### Advanced Quantification Tools

- **Speckle Strain**

Speckle Strain enables simultaneous evaluation of radial, longitudinal, and circumferential myocardial deformation. Speckle Strain is useful for early detection with unrivaled accuracy. Speckle Strain supports many key diagnostic tools; in particular, the ability to display old and new data in chronological order enables easy and instant comparison of vital data.



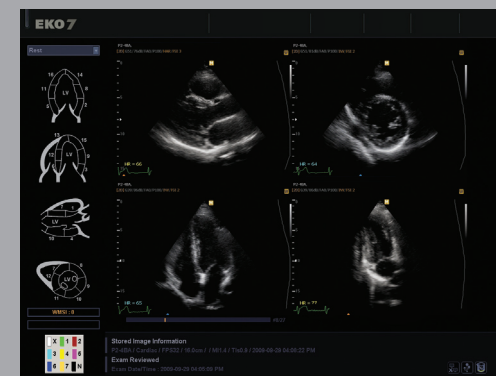
Results - Different presentations of Strain



Results - Different presentations of Strain

- **Stress Echo**

EKO 7 provides a complete package for pharmacological Stress Echo, diastolic Stress Echo, and exercise Stress Echo. The programmable features of each Stress Echo study give you a streamlined workflow to fit your needs. Stress Echo supports a flexible reporting format that can be individually optimized for your workplace environment.



Report - Scoring of Wall Motion



Protocol - Expandability



## Intuitive Layout of the Control Panel

- 1 Patient Section**  
Located on the left of the console, with all necessary patient information and archiving controls
- 2 Analysis Section**  
Located near the track ball, resulting in less reach
- 3 Color Doppler Key Section**
- 4 Spectral Doppler Key Section**
- 5 Data Management Section**  
On the right of the console, for storage of loops and printing frame images

## 19" Flat Screen Monitor

19" LCD monitor with articulated arm, giving you the most comfortable viewing angle

## Flexible Movement Mechanism

Easy up-and-down and side-to-side movement of the control panel and monitor

## Interactive Soft Menu

Easy optimization of image acquisition parameters and post processing

# Experience the comfort you seek

The new ergonomic design and easy-to-use features raise your clinical environment to the next level. From its slim and highly maneuverable lightweight design to the variable-height control panel, the entire EKO 7 system is designed for comfort and efficiency.

