

BICYCLE ERGOMETER

# *ergoselect 100*



***ergoline***  
MOVING TO HEALTH

BICYCLE ERGOMETER

## *ergoselect 100*

***ergoline***  
MOVING TO HEALTH

The classic ergometers for exercise ECG tests.

From a powerful ergometer for exercise ECG and performance diagnostics to stand-alone use for heart-rate controlled training – the integration of different modules offers maximum user flexibility for assembling an ergometer that truly meets every need.



*ergoline* bicycle ergometer ergoselect 100

- functional design
- innovative, future-proof technology
- hygienic, easy-to-clean surfaces
- mechanical seat adjustment
- patient weight up to 160 kg
- load range from 6 to 1000 Watts
- 10 user-programmable exercise test protocols
- excellent stability
- wide range of expansion options



Learn more about ergoselect 100 –  
with 360° view and technical features.





### **Max. patient weight up to 160 kg**

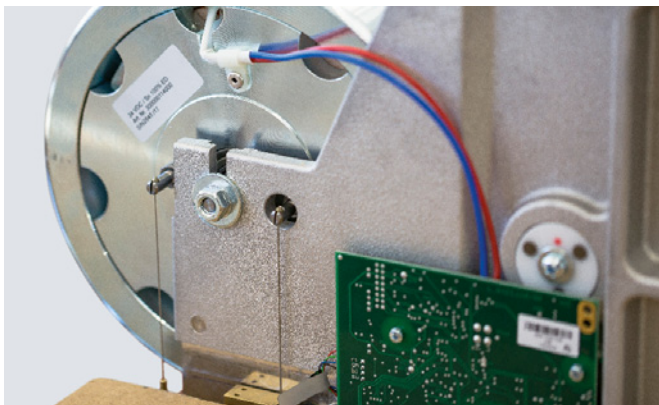
The seat height adjustment in conjunction with a tilt protection panel allows for the safe performance of exercise tests, even with patients weighing up to 160 kg.



### **High-quality materials**

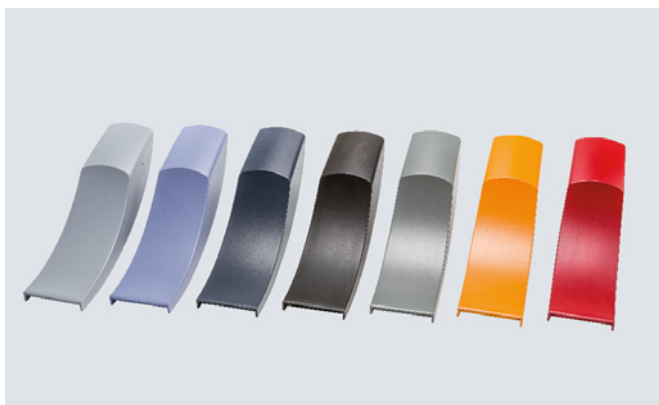
The noise-insulating ergometer case made of high-quality, specially coated polyurethane foam features an easy-to-clean, sweat-resistant surface.





### Precise load control

Thanks to the use of high-quality control electronics and reliable components, our devices don't just meet the standard specifications for medical ergometers, but far exceed them. Over the entire load range from 6 to 1000 Watts.



### Color variants

The ergometer cases are available in many colors to match any practice or hospital interior design.



### ECG connection

The ergoline interface protocol is now considered the industry standard. All leading ECG manufacturers support a control option for ergoline ergometers in their exercise ECG or ergospirometry systems.



### Universal interfaces

A wide range of connection options guarantees reliable communication with external devices such as PC-based ECG units and ECG recorders.

In addition to the standard RS-232 and USB interface, we of course also offer analog and wireless connections via Bluetooth or WiFi.

*ergoline* bicycle ergometer ergoselect 100 – modules, expansion options



**Control terminals**

The ergometer control terminal is available in 2 versions:

Type P: Control via PC/ECG unit or by exercise test protocols, and manual operation

Type K: Same as Type P, with additional training and test protocols and graphics display



## *ergoline* bicycle ergometer ergoselect 100 – modules, expansion options



### **Automatic blood pressure measurement**

The optionally integrated, automatic blood pressure measurement works with a specifically developed cuff microphone. The combination of auscultatory measurement and sophisticated algorithms for artifact suppression yields precise measurement values – even at high loads.



### **Integrated SpO2 measurement**

The ergometer can be equipped with an SpO2 measurement module for precise monitoring of the patient's oxygen saturation during ergometric testing. A wide selection of suitable SpO2 sensors is available in different sizes.



### **Horiz. seat adjustment**

The seat position can be shifted horizontally by approx. 12 cm.



### **Pedal cranks, adjustable**

The length of the pedal cranks can be adjusted in a range from 12 to 17 cm.



### **Comfort pedals**

Extra-wide pedals with adjustable pedal straps (ratchet mechanism).



### **Triathlon handlebar**

As an alternative to the standard handlebar, ergometers used for performance diagnostics can also be equipped with a triathlon handlebar that is adjustable over a wide range. Together with the adjustable pedal cranks and the horizontal seat adjustment, this allows for setting up an optimal test/training position for test subjects.

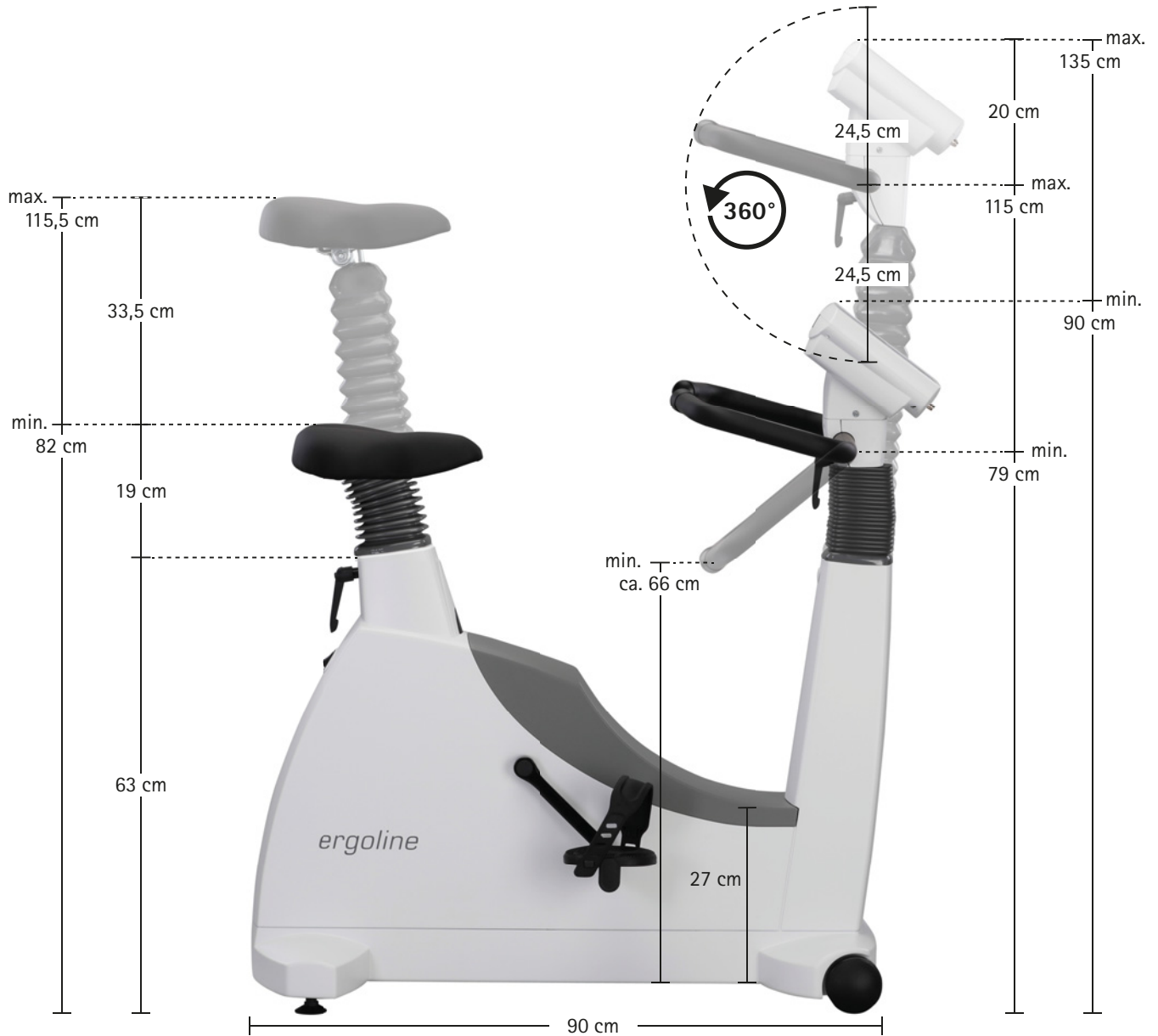


### **HR belt / chip card**

The digital chest strap reliably transmits the heart rate to enable controlled, pulsed-driven training – fully documented on a chip card.

# ergoselect 100 – Measurement

## Dimensions





# ergoselect 100 – Technical Specifications

Bicycle ergometer		ergoselect 100
Brake system		microprocessor controlled eddy current brake
Load		6 – 999 Watt, speed independent
Accuracy		according to DIN VDE 0750-238
Speed range		30 – 130 rpm
Handlebar adjustment		inclination 360°
Saddle height adjustment		continuously mechanical
Patient height		approx. 120 cm – 210 cm
Patient weight (max.)		160 kg
Control panel		
Display / patient display		load, rpm, speed, time, blood pressure, spo2 (option), heart rate (LCD) / rpm (LED)
Keyboard		membrane keyboard
Graphic display (load, heart rate)		○ (type K)
Exercise protocols		
User programmable		10
Fixed incremental protocols (WHO, Hollmann, etc.)		5
Manual load control		●
Training protocols		
Pulse-controlled training (integrated HR receiver)		○ (type K)
Predefined performance tests		○ (type K)
Options		
Automatic blood pressure measurement		○
Oxygen saturation measurement		○
Interfaces		
Digital (RS-232, USB) / analog / remote start		● / ○ / ○
Dimensions and Weight		
Ergometer		Ergometer with packaging
Length: 90 cm		Length: 107 cm
Width: 42 cm (Width handlebar approx. 53,5 cm)		Width: 60 cm
High: 90 – 135 cm		High: 146 cm
Weight: approx. 74,5 kg		Weight: approx. 92,5 kg
Miscellaneous		
Power		100 – 240 V / 50 – 60 Hz / 100 VA max.

● Standard ○ Option

PREMIUM QUALITY



MADE IN GERMANY

**ergoline GmbH**

Lindenstraße 5 | D-72475 Bitz, Germany

Phone: +49-(0)-7431-9894-0 | Fax: +49-(0)-7431-9894-128

email: [info@ergoline.com](mailto:info@ergoline.com) | [www.ergoline.com](http://www.ergoline.com)