

DEXCOWIN®

THE CONCEPT OF PORTABLE
X-RAY

ADX6000FB

Our History

Since its establishment in 2004, we have focused our efforts in developing and manufacturing imaging devices used in medical, dental and industrial fields. we have been expanding into global market where innovative companies alone can survive.

Vision

BELIEF

Progress and innovation are at the core of our company s' principle.

GOAL

To create the most advanced devices and bring them to your doorstep

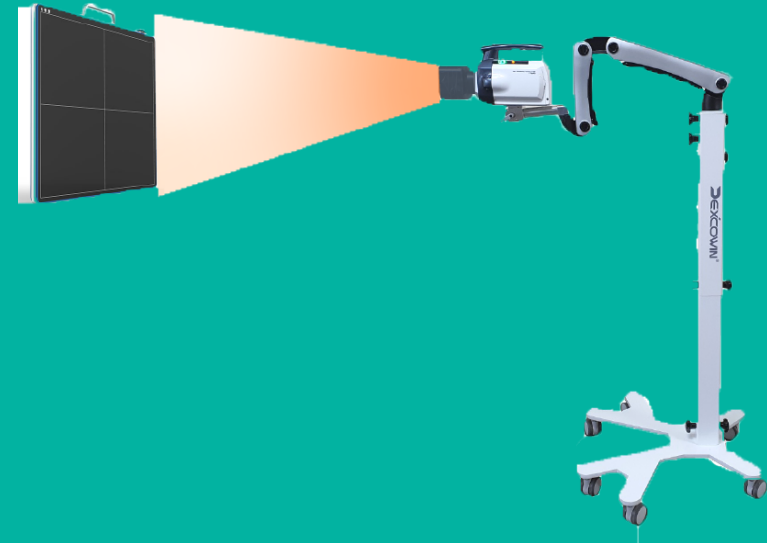
ETHICS

All devices are FDA approved and meet quality standards. we also strive to meet all needs and solve all problems our customers may have.



FEATURES

INNOVATIVE TECHNOLOGY



- The collimator's light helps to ensure accurate aiming and optimal shooting distance in order to acquire clear images.
- Its 4.3" Touch Key Control Panel LCD with an intuitive UI enables easy handling and setup.
- The system uses a Long lasting 5 Cell High capacity rechargeable battery that allows an adequate amount(up to 200) of shots with a fully charged battery.

ADVANCED SAFETY MEASURE



- The converter type Digital generator and collimator are shielded with thick multi-layered lead to prevent radiation leakage.
- Robust and convenient Handle provide a stable exposure as well as convenience.
- SSD Cage prevents excessive radiation exposure by maintaining the distance from the patient (or object).
- The Exposure button only emits radiation on the second push of the button, which prevents accidental radiation exposure.
- Safety is certified by the specialist physician.

INTUITIVE DESIGN



- Can be used in various fields such as veterinary, podiatry, e.t.c, by adjusting the power(kV & mA) values according to the purpose of use.
- Acquisition of high quality X-ray images for full body medical use due to its high power capacity.
- iRay A6FB is a Digital High Frequency X-ray source compatible with all Film Cassette, CR & DR.
- ADX6000FB can easily be carried due to its light weight or mounted on a stand/tripod for convenient use.



SPECIFICATIONS

- Tube Voltage: 50-80KV
- Tube current: 1-5mA
- Focal spot: 0.8mm
- Exposure: 0.05 - 1.35sec
- Weight: 3.6Kg
- SSD: 30cm
- Detector: Flat panel detector/Film cassette
- User Interface: Touch screen
- Power Supply: DC18.5-21V
- Total filtration: 3.1 mm Al At 80kV/HVL 0.2 mm Al

FIELDS OF USE:

Orthopedics, Podiatry, Emergency room, Ambulance, Nursing home, Veterinary, NDT

COMPOSITION

STANDARD PACKAGE:

Main body, 2 Batteries, Manual CD ROM, Backscatter Shield, Charger Sets, Certificate of Conformance, SSD cage, Assistant handle

OPTIONAL ACCESSORIES:

AllMyT(Stand), Wired Remote Controller

