

**HITACHI**  
Inspire the Next

## HI VISION Ascendus

A First Class ultrasound platform with uncompromised image quality.



## HI VISION Ascendus Raising your aspirations – realising your ambitions.

The HI VISION Ascendus is an ultrasound platform in a class of its own. No compromise in design and manufacture from us means no compromise in diagnosis for you.



Hitachi Medical Systems Europe is the European headquarters of the Hitachi, Ltd. Healthcare Business Unit whose corporate head offices are located in Tokyo, Japan; a company renowned for technological innovation. Our broad experience and expertise in ultrasound imaging makes us a recognized leader in this field, meeting the latest design and quality standards, combined with outstanding image quality and advanced clinical applications.

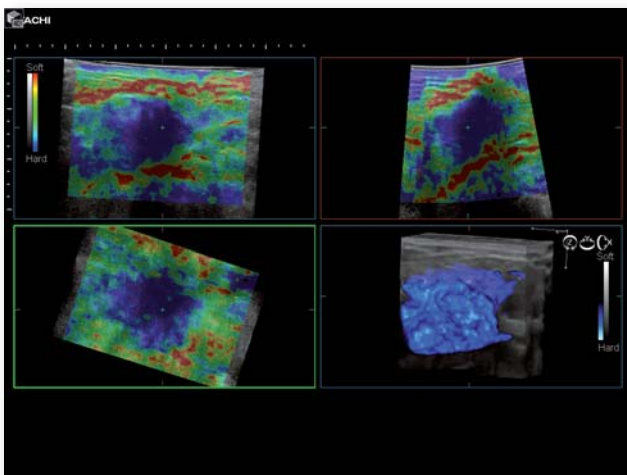


Fulfil your aspirations for a versatile, comprehensive and flexible ultrasound system that delivers allround high performance imaging for all your diagnostic needs.

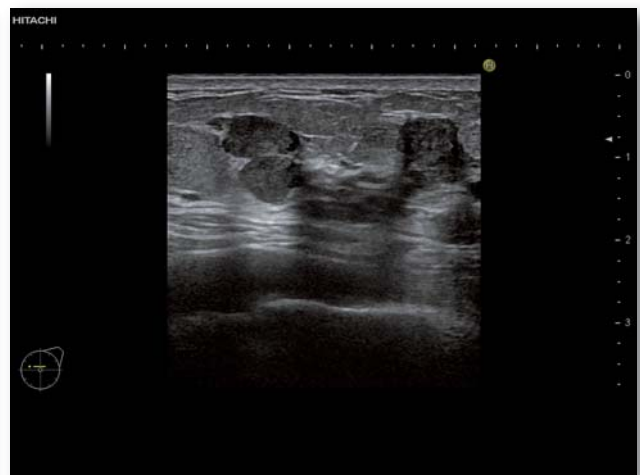
**This First Class platform features:**

- Proven, award winning ergonomic design that incorporates a unique one-action adjustment of the liquid crystal display (LCD) viewing monitor and operator console.
- Hitachi's Smart Touch Technology integrates controls within the viewing monitor to help increase efficiency – intuitive scan parameter adjustment at your finger tips.
- All round high performance capability available from the extensive range of Hitachi transducers with rapid switching between up to four connected transducers.
- Enhanced contrast imaging sensitivity across a wide range of general abdominal and high frequency applications with Hitachi's dynamic Contrast Harmonic Imaging (dCHI) software.
- High performance imaging underpinned by new leading edge technologies such as 4D Real-time Tissue Elastography (RTE) and Inflow-time mapping (ITM) of contrast agents.
- Flexible image archive and data transfer functions include multiple USB ports and the option to mask identification details to protect patient privacy.

**The HI VISION Ascendus offers a unique combination of interventional tools: fusion imaging with Hitachi's Real-time Virtual Sonography (RVS) and Real-time Bi-Plane imaging (RTBi) facilitate safe and accurate image guided procedures; dedicated biopsy, intra-operative and laparoscopic transducers support diagnostic and therapeutic procedures.**



Invasive ductal carcinoma of the breast using 4D RTE mode



High frequency image of multiple breast lesions

Realise your ambition for a first class ultrasound service with a first class ultrasound platform – Hitachi has made no compromises in the design and manufacture of the HI VISION Ascendus to give you high definition imaging, advanced technological functionality and optimised ergonomics in one all-inclusive package.

### High Definition Imaging

With an evolution in signal processing speed and spatial definition from the broadband engine architecture (UltraBE II) combined with Hitachi's extensive range of high density transducers, the HI VISION Ascendus offers superlative image quality across the full range of diagnostic applications. Four active transducer ports allow rapid switching during and between examinations to maximise high definition diagnostic capability and facilitate efficient workflow.

### One-action Adjustment

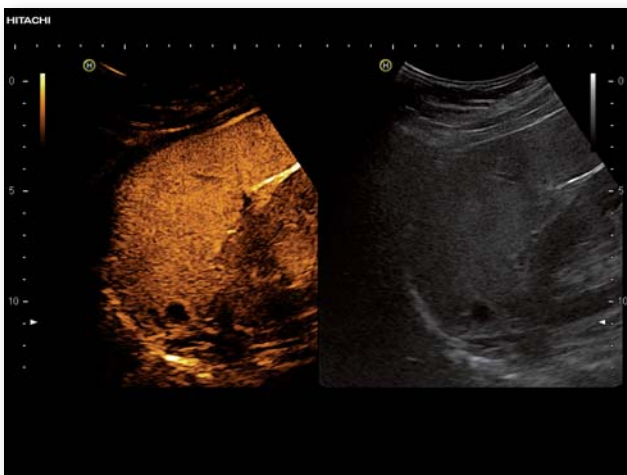
The HI VISION Ascendus platform is founded on an award-winning, ergonomic design that incorporates a unique flexible one-action adjustment of the integrated liquid crystal display (LCD) image viewing monitor and operator console to comfortably adapt to all operator and patient position combinations.

### Expand your horizons

Expert imaging modalities such as Real-time Tissue Elastography (RTE) and dynamic Contrast Harmonic Imaging (dCHI) complement the high definition imaging for improved diagnostic confidence and maximum therapeutic potential.

### Protect your investment

The HI VISION Ascendus supports the latest leading edge technological innovations – 4D RTE and Inflow-time mapping (ITM) of contrast agents – upgrades that can take your practice beyond the daily routine and enable you to solve even the most complex diagnostic dilemmas.



A splenic hamartoma seen in the contrast harmonic imaging mode



Two stones (one of millimetric size) in a gallbladder with thickened wall





## HI VISION Ascendus

A First Class ultrasound platform with uncompromised image quality.

## Distributors for Europe

### Hitachi Medical Systems Europe Holding AG

Sumpfstasse 13  
CH-6300 Zug  
Phone +41 41 748 63 33  
Fax +41 41 748 63 32

### Hitachi Medical Systems GmbH

Otto-von-Guericke-Ring 3  
D-65205 Wiesbaden  
Phone +49 6122 7036 0  
Fax +49 6122 7036 10

### Hitachi Medical Systems GesmbH

IZ NÖ-Süd, Strasse 2a, Objekt M39/II  
A-2351 Wiener Neudorf  
Phone +43 2236 677 750  
Fax +43 2236 677 75049

### Hitachi Medical Systems Kft.

Damjanich u. 11-15  
Ligetváros Irodaház I. em. 102  
H-1071 Budapest  
Phone +36 1 478 0090  
Fax +36 1 478 0091

### Hitachi Medical Systems BV

Edisonstraat 1a  
NL-2811 EM Reeuwijk  
Phone +31 182 39 77 77  
Fax +31 182 39 77 79

### Hitachi Medical Systems N.V./S.A.

Mechelen Noord II  
Wayenborgstraat 8  
B-2800 Mechelen  
Phone +32 15 20 22 55  
Fax +32 15 20 01 92

### Hitachi Medical Systems UK Ltd

1 Davy Close  
Park Farm Industrial Estate  
Wellingborough  
Northamptonshire NN8 6XX UK  
Phone +44 844 800 4294  
Fax +44 1933 4058 59

### Hitachi Medical Systems S.A.S.

39, avenue Urbain le Verrier  
F-69800 Saint Priest  
Phone +33 4 72 14 59 69  
Fax +33 4 72 81 96 06

### Hitachi Medical Systems S.p.A.

Via T. Gulli 39  
I-20147 Milano  
Phone +39 02 97166  
Fax +39 02 97166127

### Hitachi Medical Systems S.L.

Avda. de Manóteras, 22  
Local 70 y 87  
E-28050 Madrid  
Phone +34 91 358 93 50  
Fax +34 91 358 96 03

Plus representations in various  
European countries.

[www.hitachi-medical-systems.com](http://www.hitachi-medical-systems.com)

---

Specifications and physical appearance may be changed without prior notice in order to improve performance. Some features described are optional. Please read instruction manual to ensure correct operation of the equipment.

Manufactured and distributed by

 **Hitachi, Ltd.**

2-16-1, Higashi-Ueno, Taito-ku, Tokyo, 110-0015 Japan